



**Smart
Metering**



**Energy
Generation**



**Industrial
Automation**



**Gas & Water
Metering**



**Vending
Solution**



The right choice for customization in M2M

2N's machine-to-machine solutions are specifically designed, developed and manufactured according to the customers' needs. We focus on Multi-Utility Smart Metering, Energy management systems and Vending management. No matter if you are looking for large scale deployment or proof of concept, 2N can be your trusted partner. Let us tailor our innovative solutions to meet your specific requirements.

• **SMS**

• **GPRS**

• **UMTS**

• **HSPA**

• **LTE**

• **ETH**

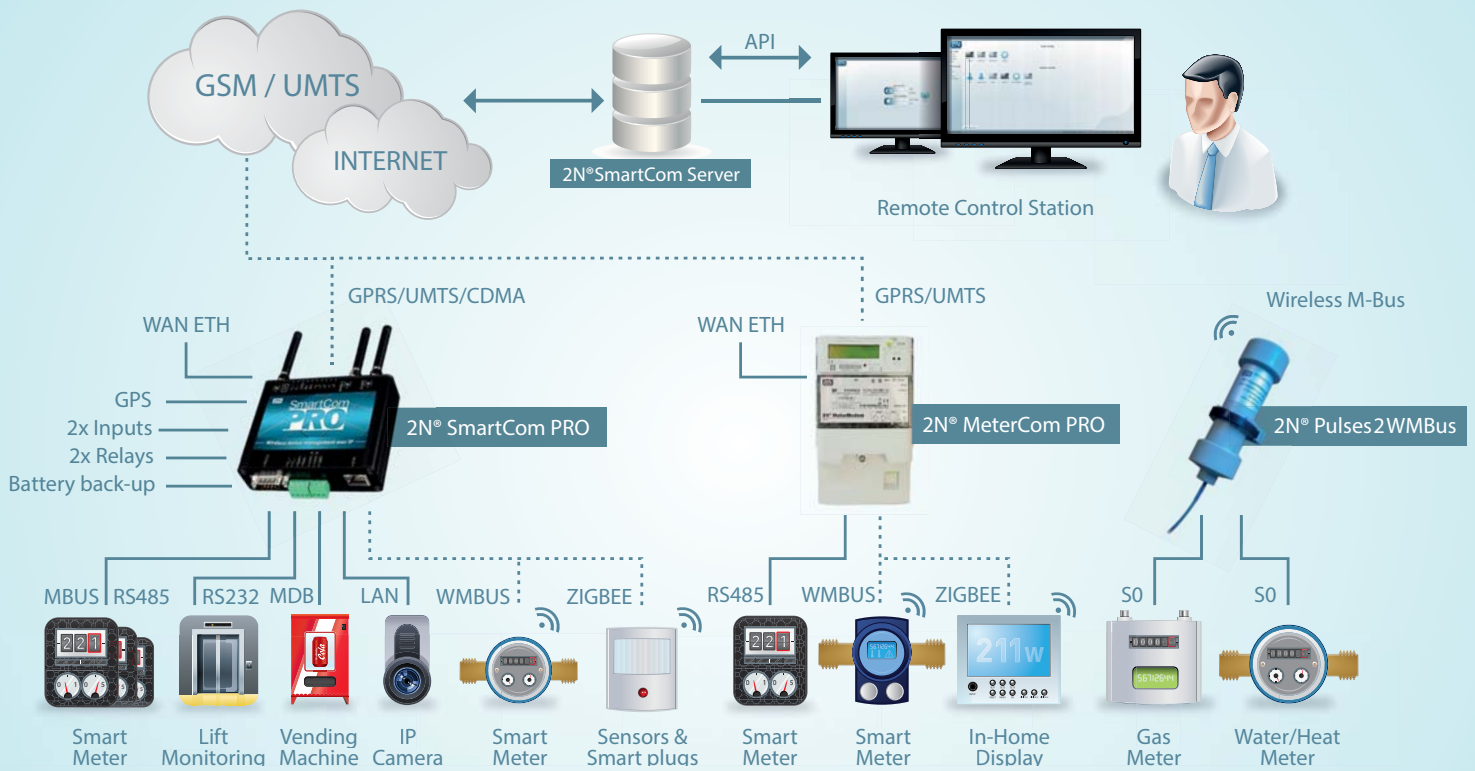
We offer solutions in these areas:

- Multi-Utility Smart Metering
- Energy management systems
- Vending machines
- Building automation remote control
- Critical applications remote control
- Sensors area remote control
- Lift monitoring

We have the right solution for:

- Utilities
- Technology integrators
- Software solutions providers
- IT & Telecommunications

M2M Network



Products

2N® SmartCom 2N® SmartCom PRO

Key Features:

- GSM/GPRS/UMTS/CDMA
- RS232/RS485/M-Bus/Ethernet
- Wireless M-Bus 169/433/868 MHz
- ZigBee, 6LoWPAN, KNX RF
- Built-in relays & inputs for sensors
- Protocol independent
- AES256 encrypted communication
- Data logging
- Back-up battery management
- Management Server Software
- Customizable functionality

Applications:

- Energy management systems
- Smart metering systems
- Vending machines
- Building automation remote control
- Lift monitoring



2N® MeterCom PRO Smart Meter Modules

Key Features:

- GSM/GPRS/UMTS/CDMA
- RS485/Ethernet/S0
- Wireless M-Bus 169/433/868 MHz
- ZigBee, 6LoWPAN, KNX RF
- Two built-in relays
- Seamlessly integrated to the meter
- DLMS/COSEM
- Event scheduler
- Data logging
- Customizable functionality
- Integration with software platforms

Applications:

- Smart metering systems
- Water/Gas/Heat metering

Reference:

- Landis+Gyr



2N® Pulses2WMBus 169/433/868 MHz

Key Features:

- 2x S0 to Wireless M-Bus
- 169/433/868 MHz
- Built for harsh environment
- Modes N1/F1/T1, C1
- Embedded antenna
- 3,6V Lithium battery
- 8 to 15 years battery life
- Fully sealed
- Rugged design
- Configuration over WMBus
- Operating temp. -40 °C to +85 °C

Applications:

- Water metering
- Gas metering
- Heat metering

